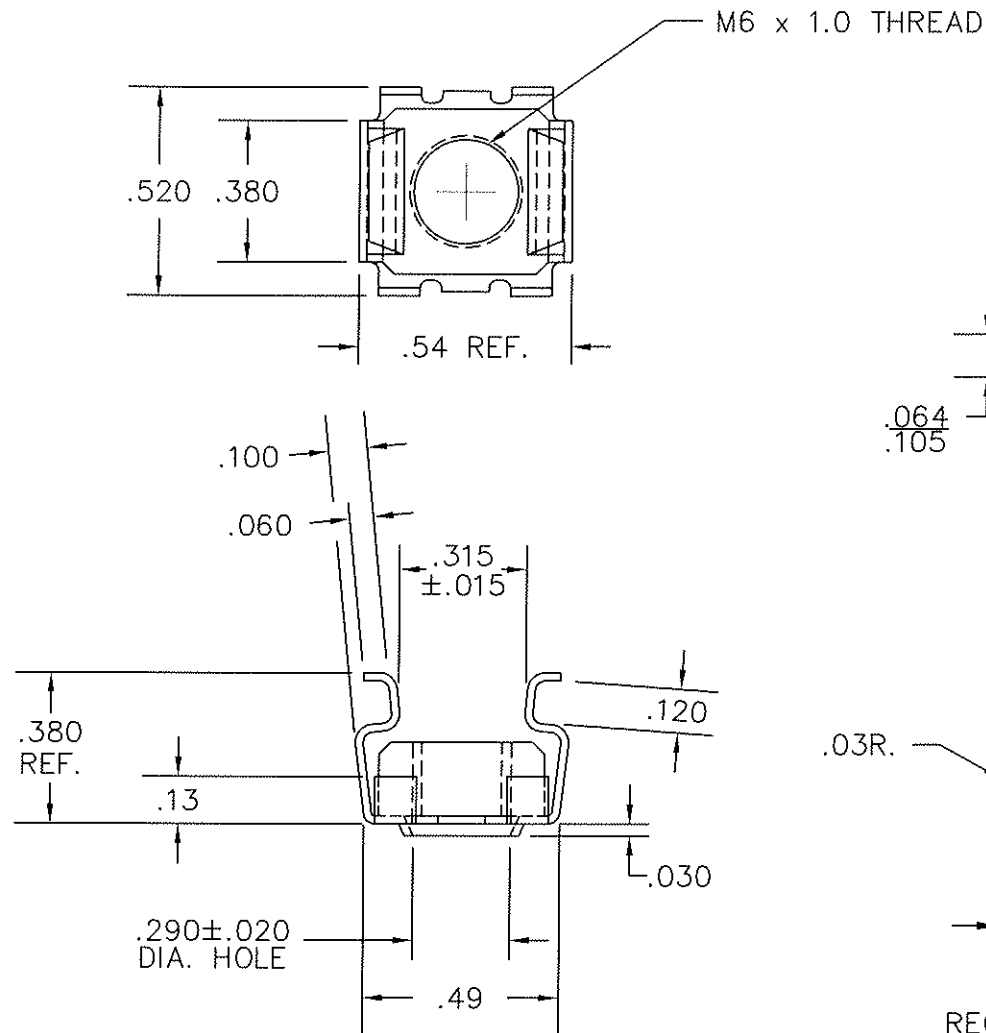
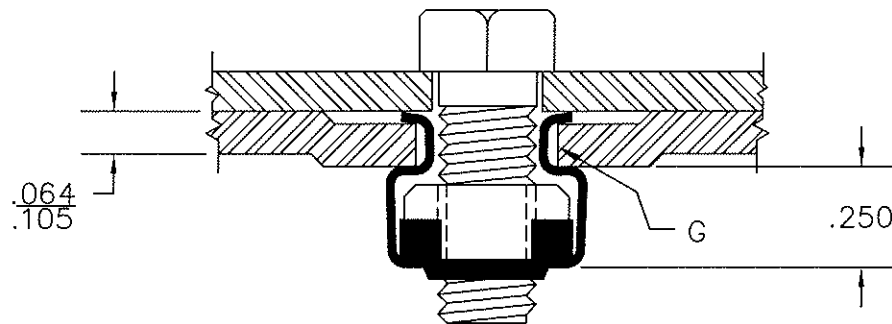


TOLERANCES  
UNLESS NOTED

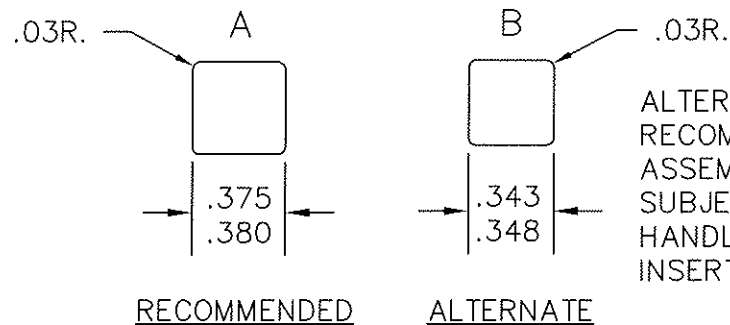
2 PLACE	+/- .015
3 PLACE	+/- .010
ANGLES	+/- 2°



TYPICAL APPLICATION



G MOUNTING HOLE



ALTERNATE HOLE LAYOUT  
RECOMMENDED WHERE  
ASSEMBLY WILL BE  
SUBJECT TO EXCESSIVE  
HANDLING PRIOR TO  
INSERTION OF SCREW

- NOTES: 1. M6 & .064 TO APPEAR ON SURFACE OF PART.  
2. FINISH: PHOSPHATE & OIL

Stay Online

SCALE: 2 TIMES

DRAWN BY: SJZ

DATE: 20 AUG 01

CAD FILE:

Item #5810 Cage Nut Snap In/1 M6 Black

MATERIAL: .020 THK. SPRING STEEL

DRAWING NUMBER