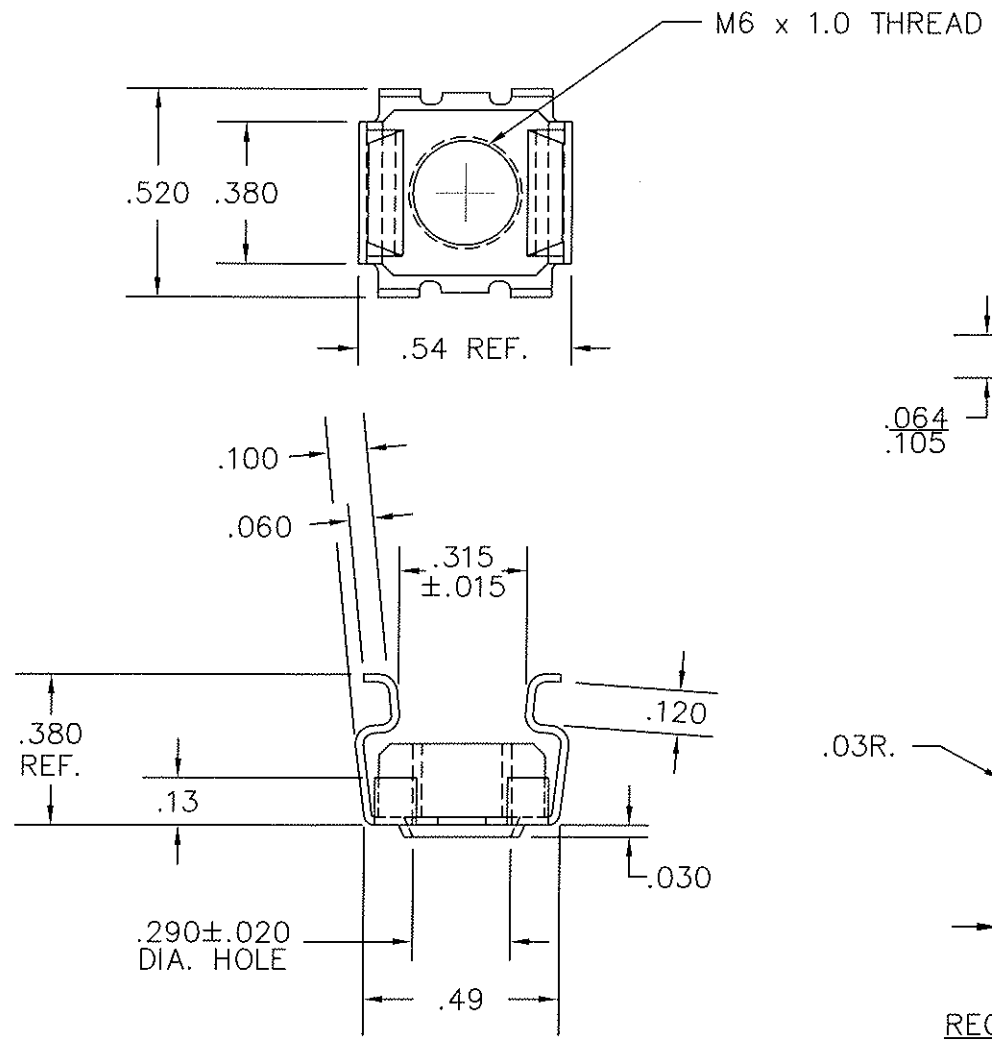
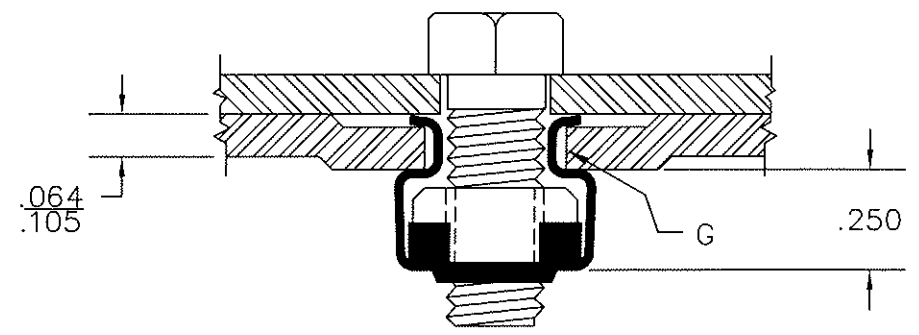


TOLERANCES  
UNLESS NOTED

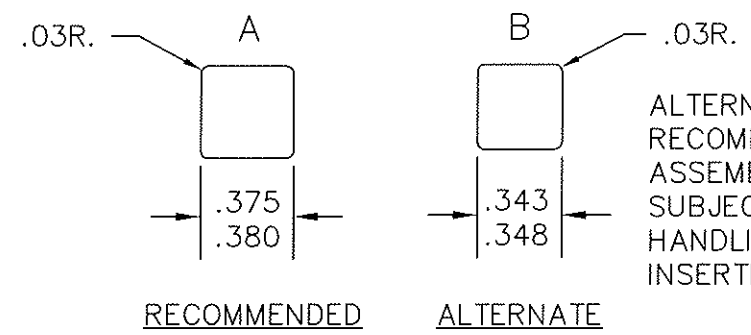
2 PLACE	+/- .015
3 PLACE	+/- .010
ANGLES	+/- 2°



TYPICAL APPLICATION



G MOUNTING HOLE



ALTERNATE HOLE LAYOUT  
RECOMMENDED WHERE  
ASSEMBLY WILL BE  
SUBJECT TO EXCESSIVE  
HANDLING PRIOR TO  
INSERTION OF SCREW

- NOTES: 1.  $\text{M6} \text{ } \text{D}$  &  $\frac{.064}{.105}$  TO APPEAR ON SURFACE OF PART.  
2. FINISH: ZINC PLATE & TRIVALENT CLEAR CHROMATE

# Stay Online

SCALE: 2 TIMES	CAD FILE:	DRAWN BY: SJZ
DATE: 20 AUG 01		
Item #4054 Cage Nut Snap In/1 M6		
MATERIAL: .020 THK. SPRING STEEL		DRAWING NUMBER