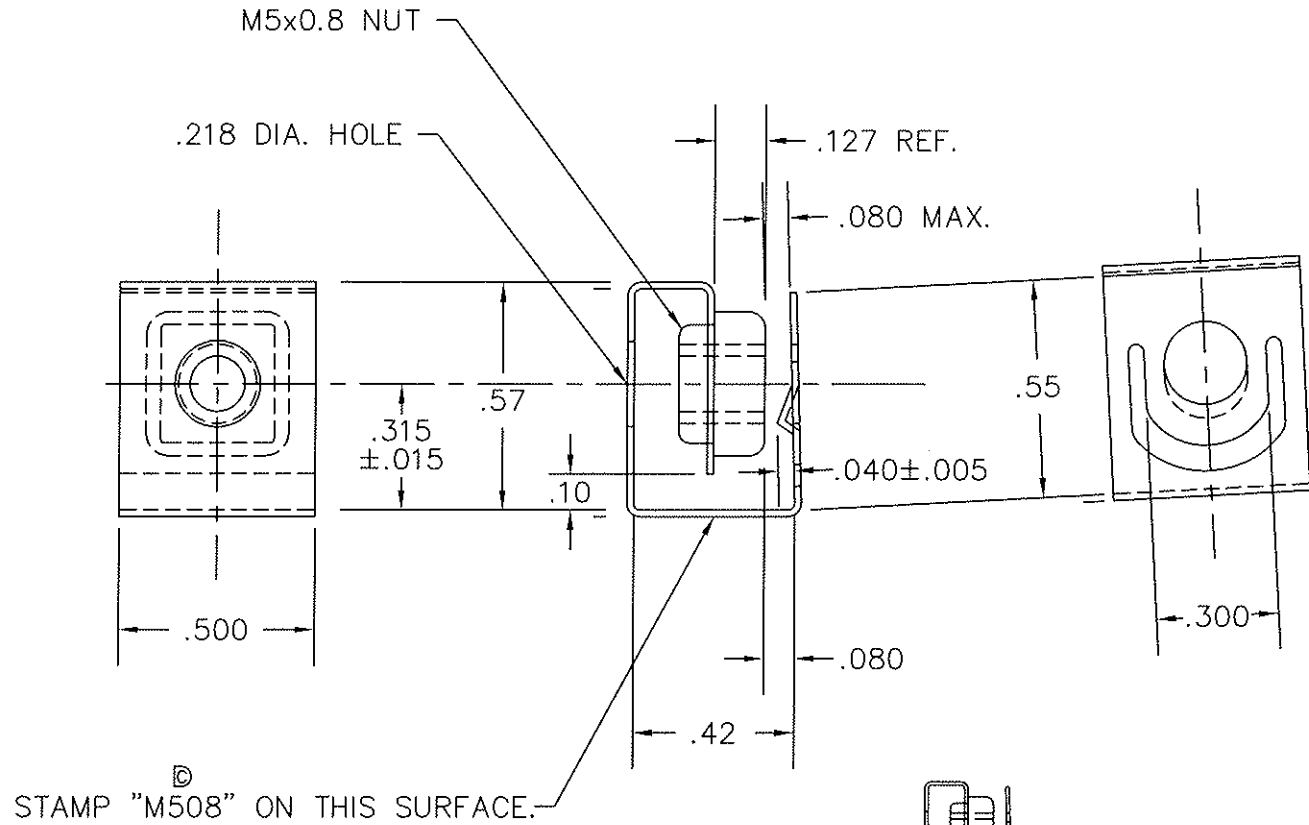
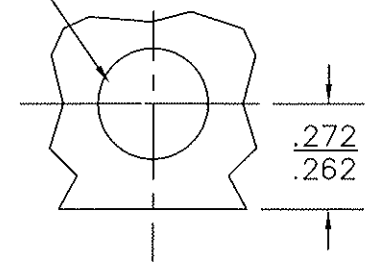


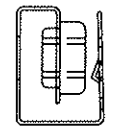
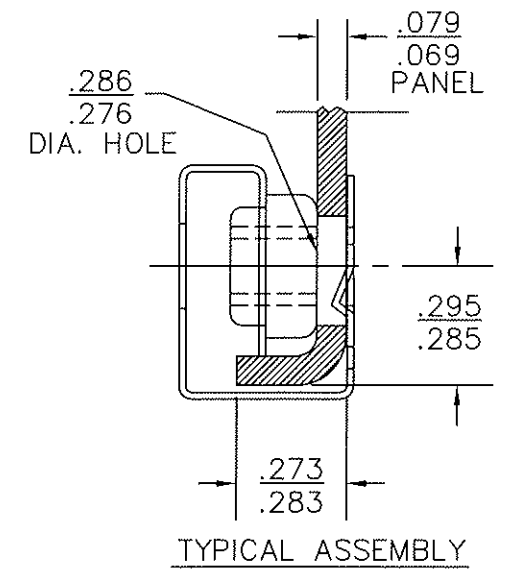
TOLERANCES UNLESS NOTED	
2 PLACE	+/- .015
3 PLACE	+/- .010
ANGLES	+/- 3'



.286
.276
DIA. HOLE



RECOMMENDED HOLE LAYOUT IN
.060 - .070 FLAT PANEL.



ACTUAL SIZE

TYPICAL ASSEMBLY

FINISH: ZINC PLATE & TRIVALENT CLEAR CHROMATE

Stay Online		
SCALE: 2 TIMES	CAD FILE:	DRAWN BY: SJZ
DATE: 15 MAR 01		
Item #1325 Cage Nut Slide On/1 M5		
MATERIAL: .017 THK. SPRING STEEL		DRAWING NUMBER