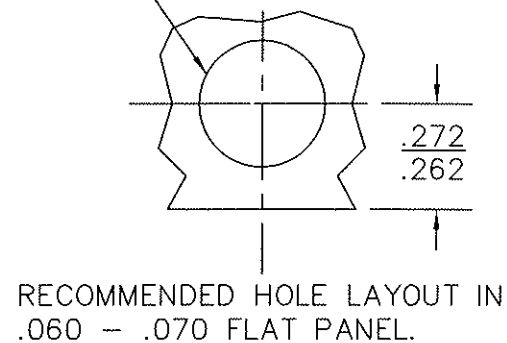
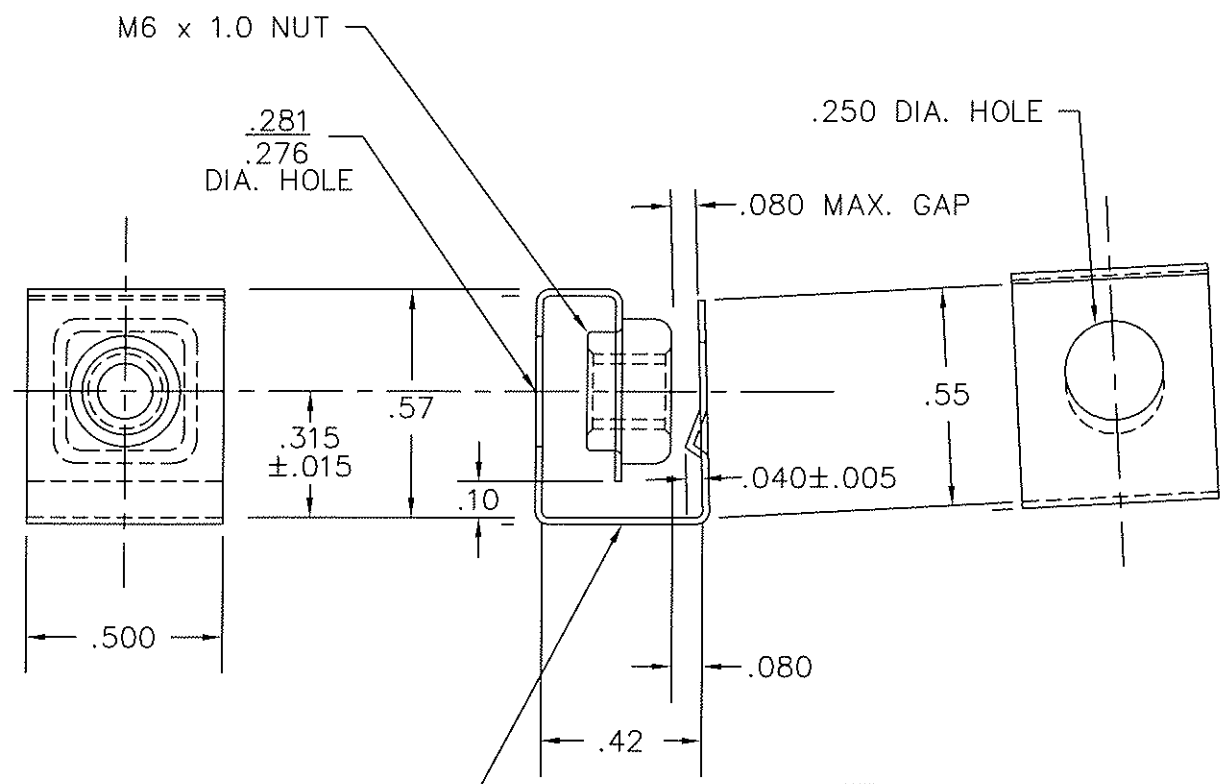
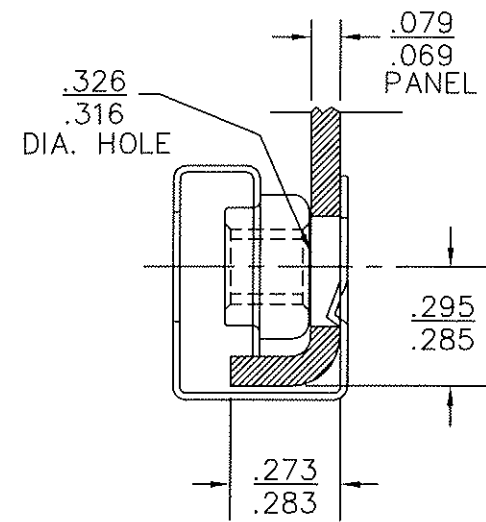



TOLERANCES UNLESS NOTED	
2 PLACE	+/- .015
3 PLACE	+/- .010
ANGLES	+/- 3'

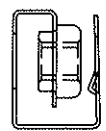


RECOMMENDED HOLE LAYOUT IN .060 - .070 FLAT PANEL.



TYPICAL ASSEMBLY

STAMP  ON THIS SURFACE.



ACTUAL SIZE

FINISH: ZINC PLATE & TRIVALENT CLEAR CHROMATE

Stay Online		
SCALE: 2 TIMES	CAD FILE:	DRAWN BY: SJZ
DATE: 17 MAR 00		
Item #1328 Cage Nut Slide On/1 M6		
MATERIAL: .017 THK. SPRING STEEL		DRAWING NUMBER